



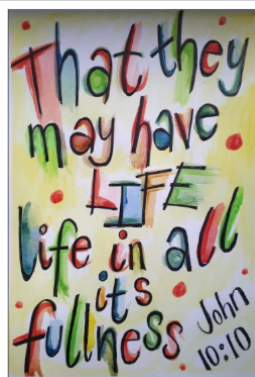
That they may have life; life in all its fullness - John 10:10

Hordle CE (VA) Primary School & Nursery

COLLECTIVE WORSHIP POLICY 2025/26

Any reference to 'the school' throughout this policy shall mean Hordle CE (VA) Primary School and Nursery.

Through an education rooted in God's love and grounded in our community through teamship, our children will shape their identity to become aspirational learners, with enquiring minds and deeply held personal values ready to take on their responsibilities; living life in all its fullness as Global Citizens of the future



Contents

1. Introduction	2
2. Purpose of Worship	2
3. Aims	3
4. How We Achieve Our Aims	3
5. Central Attributes of an Act of Worship	4
6. The Centrality of Prayer	4
7. Communication	6
8. Parental Involvement	6
9. Legal Status of Collective Worship	6
10. Right to Withdraw	6
11. Collective Worship Guidance is Contained in Circular 1/94.	6
12. Responsibilities	6
13. Monitoring and Evaluation	6
14. Useful Links	7
15. Review	7

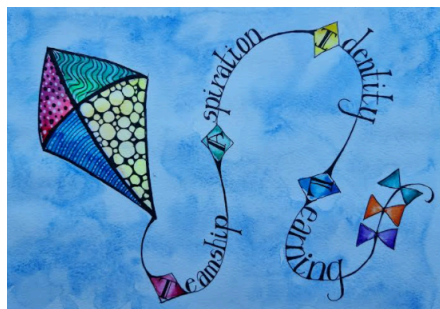


That they may have life; life in all its fullness - John 10:10

1. Introduction

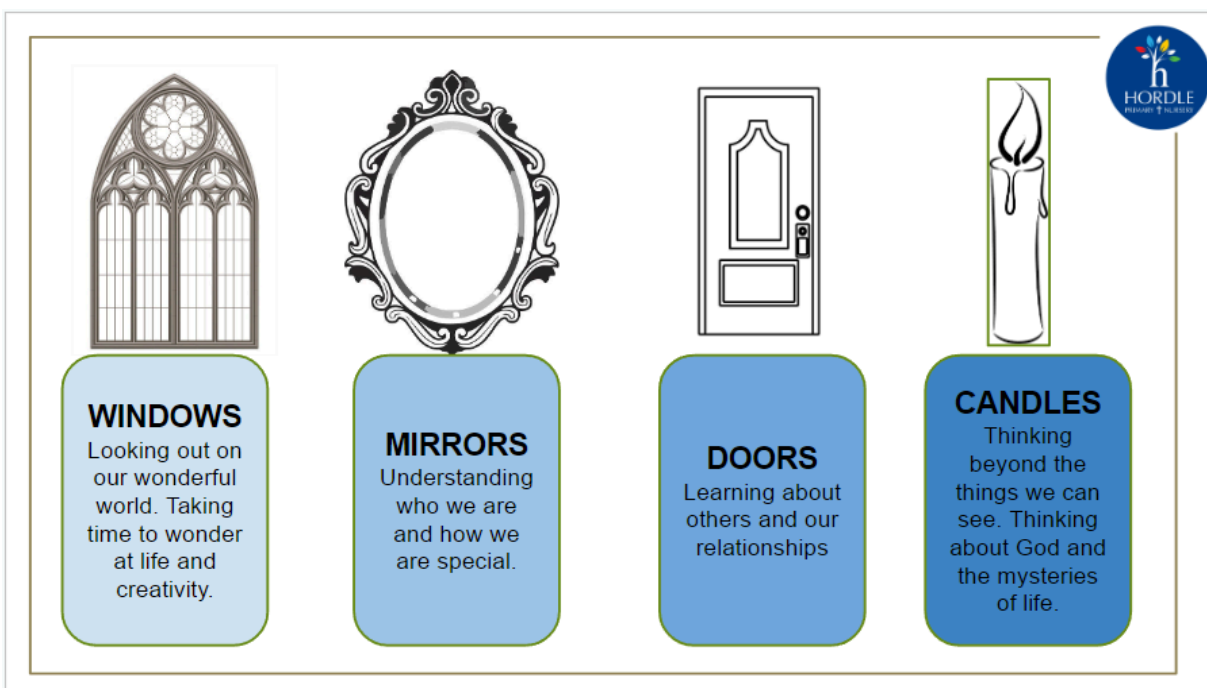
References to 'parish' refer to the local parish church which the school is linked to. This is the parish named in the Instrument of Government for the school (IoG). The vicar will be the 'principal officiating minister' of the named parish.

In our worship, which is linked to the Fruits of the Spirit, we link each worship to our Christian Values which are based on the Church of England Values for education:



Teamship - Community
Identity - Dignity
Aspiration - Hope
Learning - Wisdom

We will explore different aspects of our growth as spiritual beings through worship using the Diocesan model:



2. Purpose of Worship

As worship:

- Be, in its simplest, create a time and space where we can come closer to God and God can come closer to us
- Be distinctively Christian
- Use and promote the clearly identified core Christian values of the school
- Have Integrity as acts of Anglican worship whilst being Invitational, Inclusive and Inspirational
- Be based on Biblical text or themes



That they may have life; life in all its fullness - John 10:10

- Enable participants to develop an understanding of Jesus Christ and a Christian understanding of God as Father, Son and Holy Spirit
- Be central in importance to the life of our school community, which is part of a wider community that embraces the whole world
- Reflect on human existence
- Use the seasons and festivals of the Christian year
- Develop understanding of Anglican traditions and the practice of the local parish church

For people:

- Develop personal spirituality within the school community through a range of experiences including individual and collective prayer
- Engage pupils and adults with collective worship, making it relevant and transformational to the lives of members of the whole school community
- Celebrate the God given gifts and talents of individuals and the whole school community
- Make a significant contribution to the overall spiritual, moral, social and cultural development of members of the school community
- Consider the beliefs and values of others, especially those within the school community and across the wider world, including the Fundamental British Values
- Raise aspirations of individuals and the school community

To comply:

- Reflect the trust deed
- Be clearly outlined in the school prospectus and documentation
- Involve learners and adults in planning, leading and evaluating collective worship
- Be monitored and evaluated for the impact it has on the school community by foundation governors

3. Aims

By participating in worship, we aim to:

- Promote the joy of worship as engaging, inspiring and transformative.
- Develop spirituality, morality, social and cultural values.
- Sometimes to provide a peaceful environment enabling stillness, reflection and prayer.
- Sometimes to be noisy and joyous with singing, music, dance, drama, gymnastics etc.
- Give an opportunity to acquire a secure knowledge of the Christian faith as revealed in the Bible.
- Understand, celebrate and develop children's knowledge of Christian beliefs, celebrations, traditions and religious festivals in the Anglican Church's year.
- Appreciate that people, cultures and beliefs differ and to demonstrate respect, tolerance and generosity towards them.
- Develop pupils' sense of self-worth and to provide opportunities to celebrate achievements.
- Develop a caring attitude to others and a sense of community and loyalty.
- Provide opportunities for children to plan, lead, contribute to, monitor and evaluate collective worship.
- Invite clergy of the parish, other lay members of the parish and other Christian leaders in the community (as are acceptable to the parish church) to lead worship weekly.

4. How We Achieve Our Aims

We aim to promote collective acts of worship, which are rich, meaningful experiences that are appropriate and significant to the pupil's needs, age, development and interest by:

- Creating a sense of occasion and reverence following the 4 central attributes of worship.
- Arranging worship at different places when possible, different times with different people and groupings, involving all members of the school community at some time.



That they may have life; life in all its fullness - John 10:10

- Planning and linking themes which focus on a particular idea/concept, i.e. the liturgical year; RE curriculum, festivals and celebrations, within Christian and other faith traditions, our Christian values or RRR or other resource programme – celebrating achievements, good work and behaviour.
- Using a wide range of resources, devotional aids, artefacts (from religious and secular sources), music, art, drama and external speakers to engage children's interest.
- Encourage children to participate and experience different styles of worship, e.g. prayer, praise, silence, rituals, and become familiar with the language of worship, Biblical readings and liturgy.
- Providing opportunities for pupils to reflect, contemplate on their own thoughts, feelings and beliefs.
- Using the centrality of prayer – personal silent prayer, personal shared prayers, collective prayers, writing prayers.
- Providing opportunities that develop pupil's awareness of what is beautiful, good, wonderful, awesome and puzzling in life experience.
- Involving pupils and members of the wider community to participate in collective worship and activities within the parish.
- Presenting and creating displays that promote and enhance spiritual ideas, thoughts and questions.

5. Central Attributes of an Act of Worship

The School will endeavour to fulfil the legal requirements of 1988 Education Reform Act in conjunction with School's trust deed, by holding 'an act of collective worship every day'.

During collective worship, whether in the hall, classroom or outside, we will apply the following 'central attributes' of worship:

- **Gathering** - Making special and significant this part of the day through appropriate symbol and ceremony
- **Engaging** - Using the best available techniques to stimulate interest in the content
- **Responding** - Ensuring there is time and opportunity for individual, group reflection and thought, so those attending can respond in a variety of ways and in addition
- **Sending** - Summarising the worship in a meaningful short message used to create an opportunity for those attending to implement the ideas covered and to conclude the worship

See 'Useful Links' for a fuller explanation of the central attributes of worship.

In our school, Worship will typically be organised according to the following schedule.

- **Monday** STEP, Attitude of Gratitude or Cultural/FBV Worship
- **Tuesday** Singing Worship - Worshipping God through song
- **Wednesday** Whole school worship led by the Vicar or a member of All Saints Church
- **Thursday** Whole School Worship or reflection - Main Theme
- **Friday** Celebration Worship - Thank God for our talents

Organisation Whole School / Class / Key Stage may vary depending on the year or term.

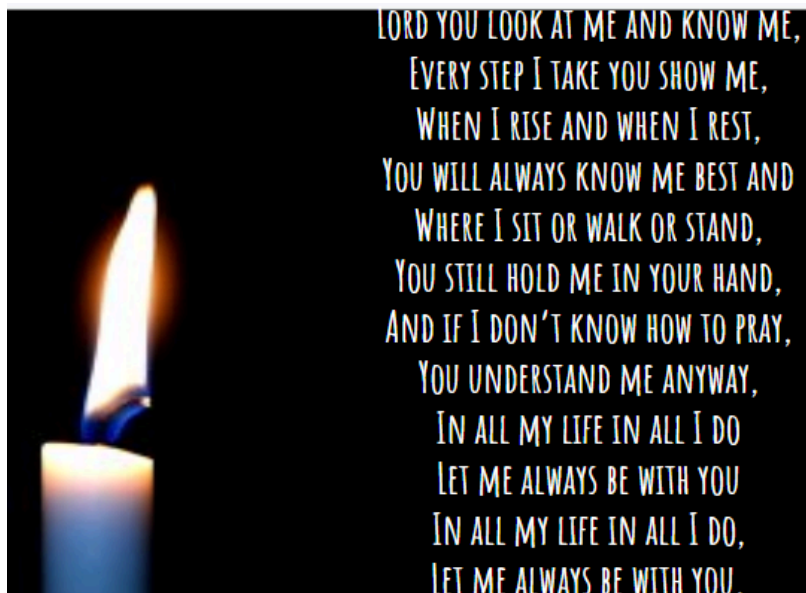
Collective worship is planned systematically, so that there is continuity, variety and clear focus on Christian beliefs and festivals. Worship is led by a variety of people that include School staff, pupils, Governors, representatives from the parish church, members of different faith communities and members of the local community.

6. The Centrality of Prayer

During the collective worship there will be a time for response and reflection, to ponder on a question, statement or thought. This may also be reflected in a prayer, offered spontaneously by a pupil or adult, read out or recited. Our school prayer is:



That they may have life; life in all its fullness - John 10:10



This prayer may be displayed and used in class and school reflective areas so that:

- Children understand the nature and purpose of prayer.
- Children understand the part prayer may play in their lives and the life of the school community.
- Prayer contributes to the spiritual development of individuals and the whole school community.

There will also be appropriate opportunities for prayer and other worship activities, including reflection, outside of collective worship.

We will use this version of the Lord's Prayer:

OUR FATHER IN HEAVEN
HALLOWED BE YOUR NAME
YOUR KINGDOM COME
YOUR WILL BE DONE
ON EARTH AS IT IS IN HEAVEN
GIVE US THIS DAY OUR DAILY BREAD
AND FORGIVE US OUR SINS
AS WE FORGIVE THOSE WHO SIN AGAINST US
LEAD US NOT INTO TEMPTATION
AND DELIVER US FROM EVIL
FOR THE KINGDOM THE POWER AND THE GLORY ARE YOURS
NOW AND FOREVER
AMEN

Each class has a 'reflective area' to engage and promote individual pupils and adults, as well as designated special spaces around the school.

All classes have access to the Bibles in the library.



That they may have life; life in all its fullness - John 10:10

7. Communication

The weekly school newsletter contains the weekly theme and a Bible or secular quote which reflects the theme of this week's worship so parents are always informed about the worship taking place in school.

Some parents will value this personally and may discuss and reflect on the worship at home with their child.

Information about school worship is also provided to the local parish church, through the Vicar and PCC & Trustee Governors so parishioners can also be informed about the worship in school. The School will also periodically participate or lead worship in the church.

8. Parental Involvement

Parents are actively encouraged to participate in some church services.

9. Legal Status of Collective Worship

All maintained schools in England must provide a daily act of collective worship.

In a Church of England School, worship must be in line with the trust deed of the school and will reflect the traditions of the Church of England, i.e. the Anglican tradition.

10. Right to Withdraw

Parents have the right to withdraw their child from the daily act of collective worship. Schools must comply with this wish and must ensure a duty of care for pupils who are withdrawn from collective worship.

11. Collective Worship Guidance is Contained in Circular 1/94.

The school will respect parental requests and will try to discuss the request to see if an accommodation can be reached and to ensure worship remains inclusive and invitational and open to all members of the school community.

12. Responsibilities

The normal expectation within our church school is for all staff to view daily collective worship as an important part of their own well being and spiritual development as human beings. The school will endeavour to timetable staff so all have an opportunity to attend regularly. While staff may not always be able to attend due to timetable commitments, it should be noted that all staff are always welcome to attend the daily act of worship.

At interview all applicants are informed that the school holds daily acts of collective worship that promote the Christian ethos and values of the school.

The normal expectation will be that teaching staff, including student teachers, will participate in and lead collective worship. The school provides support, guidance and training to enable them to develop confidence in this aspect of their role.

13. Monitoring and Evaluation

Monitoring and evaluation of collective acts of worship is undertaken by pupils, staff or governors on a termly basis.

Pupils are centrally involved in evaluating collective worship through feedback in weekly class worship, questionnaires and pupil conferences.

All leaders of collective worship are asked to evaluate continuously, reflect after every worship, to develop and improve their practice.



That they may have life; life in all its fullness - John 10:10

14. Useful Links

Impact of Collective Worship – The inspection of collective worship by SIAMS (church school inspection)
The evaluation schedule for THE IMPACT OF COLLECTIVE WORSHIP can be found on page 13 and 14.

https://www.churchofengland.org/sites/default/files/2018-04/SIAMS%20Evaluation%20Schedule%202018_0.pdf

Central Attributes of Collective Worship – The central attributes of collective worship explained

A guide to the core elements of worship can be found on this page:

<https://www.portsmouth.anglican.org/education/collective-worship/>

Collective Worship Observation – Collective worship observation form

A model collective worship form can be found here: <https://www.portsmouth.anglican.org/education/collective-worship/>

Evaluating Collective Worship – A practical guide to evaluating collective worship

<https://www.portsmouth.anglican.org/education/collective-worship/>

Bitesize Worship Guidance - Bitesize Worship Guidance Hordle

Can be found at the following link: <https://docs.google.com/document/d/1TgSfSbdJeWiVuqjQiQm4kuTabW0igbM/edit>

15. Review

This policy will be reviewed annually, or earlier if changes are made to the SIAMS Evaluation Schedule.

	DATE	Ethos	Equality	Practice	Guidance
This policy was reviewed and screened by the Governing Body	2025/26	<input checked="" type="checkbox"/>	<input checked="" type="checkbox"/>	<input checked="" type="checkbox"/>	<input checked="" type="checkbox"/>
Next scheduled review:	Academic Year 2026/2027				