



# LOWER JUNIORS NEWSLETTER

SUMMER TERM 2026

With the Easter holidays approaching, we are so pleased with how the children have engaged with our Earthquake topic and look forward to discovering the wonders of the rainforest together in the Summer term.

## WHAT'S ON NEXT HALF TERM

### Rainforest (Geography)

Next term, we will be diving into the incredible world of rainforests - exploring the different types of rainforests, their ecosystems and learning how to protect them.

**Sound (Science)** In this unit, children will learn about how vibrations create sound and explore the concepts of pitch and volume. They will investigate how sounds travel, how they can be changed and what affects the way we hear them.

**Henri Rousseau (Art)** Children will explore the vibrant style of Henri Rousseau, creating their own artwork inspired by his imaginative jungle scenes. They will also learn about post-impressionism: discovering how artists used bold colour and expressive techniques to bring their ideas to life.



LJ Curriculum Overview

[https://www.hordle.hants.sch.uk/\\_site/data/files/documents/Curriculum/ECC0C9ECD961467010FE82682455DF1B7.p](https://www.hordle.hants.sch.uk/_site/data/files/documents/Curriculum/ECC0C9ECD961467010FE82682455DF1B7.pptx)



## ENGLISH

### National Geographic

Children will read National Geographic pages to learn all about sloths and orangutans, before creating their own non-fiction text about a rainforest animal of their choice.

### Talking History - The Great Kapok Tree

After reading *The Great Kapok Tree*, children will explore famous speeches about saving the rainforest. They will practise performing these with intonation and then compose their own speeches on the issue of deforestation.

### Explorer by Katherine Rundell

Adventure writing inspired by *The Explorer*.

## MATHS



- Work with money by adding, subtracting and calculating amounts in pounds and pence, including giving change.
- Tell, write and convert time using analogue, digital, 12 and 24 hour clocks and compare durations.
- Recognise, compare and classify shapes including quadrilaterals and triangles based on their properties.
- Identify, describe and compare angles including right, acute and obtuse angles
- Explore symmetry

'That they may have life; life in all its fullness' John 10:10

## SUPPORTING YOUR CHILD AT HOME

**Reading** - we ask that children read 4x per week and that this is recorded in their Reading Challenge. Reading Challenges are expected to be in school every day.

**Homework** - Maths or SPAG/Reading homework is set each Tuesday and checked each Monday. Please check Century for due assignments.

**Spellings** - We really appreciate your support in helping your child to learn their common exception word spellings fortnightly together with practising their dictation sentences for the spelling unit.

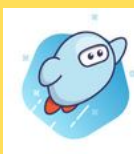
**TTRS** - Regular times table practise helps with many areas of the Lower Junior maths curriculum. In Year 3, we encourage children to complete garage sessions and in Year 4, please can they focus on 'Soundcheck'.



CENTURY  
<https://app.century.tech/login/>



TTRS  
<https://play.itrockstars.com/>



### SORA

SORA is a free app from Hampshire's school library service. When you download the app, children will have access to hundreds of quality e-books or audiobooks - perfect for long car journeys or bedtime listening.



### DIARY DATES

Please visit the school calendar regularly for updates.



### Attendance

We monitor attendance carefully as there is a strong link between attendance and achievement. Days off add up to lost learning. We appreciate your support in allowing your child to access the education they deserve.



### GETTING IN TOUCH



Teachers are happy to help and are generally available at the end of the school day or by email. Please do not try to catch them in the mornings while they are settling the children. Urgent messages can be passed to the school office. Please allow up to 2 school days for email responses as teachers are child-facing during the day.

clare.phillips@hordleprimary.co.uk

maribel.nicholson@hordleprimary.co.uk

emma.culver@hordleprimary.co.uk

amy.cazneaux@hordleprimary.co.uk