



# KEY STAGE ONE NEWSLETTER

SPRING TERM 2026

We hope you all had a wonderful Christmas and New Year. We are all excited to start the spring term.

## WHAT'S ON THIS HALF TERM

### How Does your Garden Grow? (Science)

This half term, children will learn about wild and garden plants. They observe how seeds and bulbs grow over time, learning what they need to grow and setting up an experiment to test different types of seeds.

**Sandwiches (DT)** In this unit, children will learn about a healthy and varied diet. They will then design and make an appealing sandwich for a younger child.



KS1 Curriculum Overview



## ENGLISH

### Colour Poetry

Children learn the poem 'What is Pink' before writing their own poem based on colours.

### Hansel and Gretel

Children read the traditional version of Hansel and Gretel before looking at Bethan Woolvin's twist on the traditional.

### The Three Little Pigs

Children study this traditional tale before taking on the role of Mummy Pig writing letters to her naughty little pigs.

### The Tin Forest

Children write a scene description of a rainforest, a tin forest and then the two combined

## MATHS



### Multiplication and Division

Counting in 2s, 5s and 10s

Recognising and making equal groups

Total repeated addition

Grouping and Sharing

### Fractions

Finding half of objects, shapes and amounts

Finding quarters of objects, shapes and amounts

Finding thirds of objects, shapes and amounts

### Statistics

Making tally charts

Reading and making tables

Drawing and interpreting pictograms

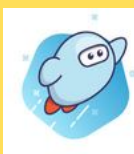
'That they may have life; life in all its fullness' John 10:10

## SUPPORTING YOUR CHILD AT HOME

**Reading** - we ask that children read 4x per week and that this is recorded in their reading challenge. Reading challenges are expected to be in school every day.

**Spellings** - We really appreciate your support in helping your child to learn their weekly spellings. They will be tested each Friday.

**Numbots** - Regular practise helps with many areas of the Key Stage One maths curriculum.



### SORA

SORA is a free app from Hampshire's school library service. When you download the app, children will have access to hundreds of quality e-books or audiobooks - perfect for long car journeys or bedtime listening.



### DIARY DATES

Please visit the school calendar regularly for updates.



### Attendance

We monitor attendance carefully as there is a strong link between attendance and achievement. Days off add up to lost learning. We appreciate your support in allowing your child to access the education they deserve.



### GETTING IN TOUCH

Teachers are happy to help and are generally available at the end of the school day or by email. Please do not try to catch them in the mornings while they are settling the children. Urgent messages can be passed to the school office. Please allow up to 2 school days for email responses as teachers are child-facing during the day.

lucy.sheard@hordleprimary.co.uk

james.culver@hordleprimary.co.uk

rose.harrison@hordleprimary.co.uk