

Nursery Note



SCHOOL
BASED
NURSERIES

Friday 6th March 2026

Summer Term Sessions

Following our recent funding and charging consultation and subsequent introduction of our updated funding and charging model at Hordle Explorers Nursery. We will reconfirm all sessions to our families in the coming week (regardless of whether you have changed hours or not) to ensure everything is correct on our system before the term begins.

To confirm, our new sessions, effective from Summer term, are as follows:

Breakfast Club - 8:00am - 9:00am

All Day Session - 9:00am or 10:00am - 3:00pm or 3:30pm

Morning Session - 9:00am or 10:00am - 12:00pm

Afternoon Session: 12:30pm - 3:00pm or 3:30pm

After School Club: 3:30pm - 4:30pm or 5:00pm or 5:30pm
(please be reminded that After School Club is open until 5:00pm only on Fridays)

As a reminder, all hours attended during 10:00am - 3:00pm will be funded, **up to 25 hours per week**, dependent on your eligibility. Any hours attended outside of the funded times, will be invoiced at our standard hourly rate of £8.00 per hour. We kindly ask all families to please complete the attached funding form, for hours in place from Summer term. Please can we ask that these are completed and returned by

Monday 16th March.

Thank you for your cooperation.

2026/27 INSET Days

We are pleased to publish our INSET days for 2026/27. Please see below:

- Tuesday 1st September
- Friday 23rd October
- Monday 2nd November
- Monday 4th January
- Friday 5th March

We have been mindful to place INSET DAYS on Mondays and Fridays, allowing for three days weekends and trust that having these dates in advance will be useful in being able to make the most of family time together where possible.

As a reminder to all families, we are a term time nursery and so the nursery will be closed during school holidays and INSET days, in line with Hordle Primary School.

To confirm, we have one final INSET day for this academic year, Friday 20th March. The nursery will be closed on this date.

Easter Parent/Family Event

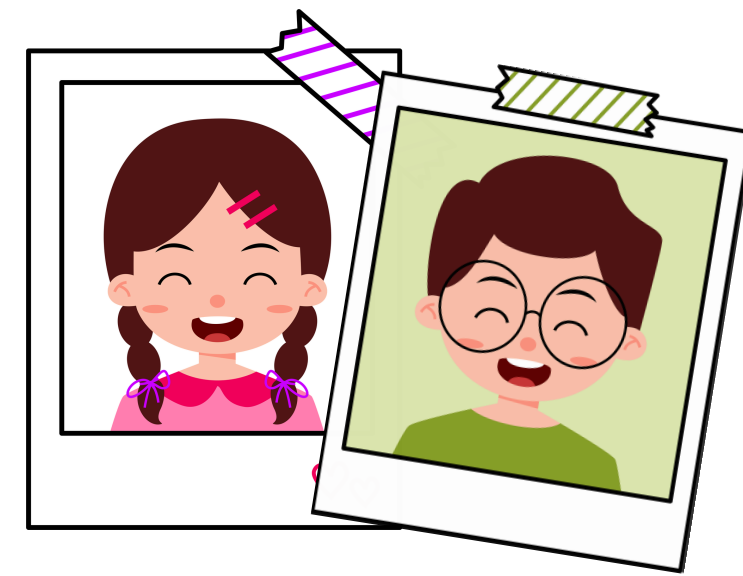
We are excited to announce that we will be hosting an Easter family event for both Team Nest and Team Wild on **Thursday 26th March**. We would like to invite parents/carers to join us for a stay and play afternoon (please note, Team Wild will also have some crafts available to participate in, as well as an opportunity to purchase your child's daffodil for a suggested donation of 50p).

For further information please click on [THIS FORM](#). We kindly ask that all families confirm whether you will be joining us for the event.

Please note, we kindly request a maximum of 2 guests per child (this could be either 2 adults or 1 adult and 1 child). Thank you for your cooperation.

Spring Starter Nursery Portraits - Tuesday 24th March

We are very pleased to advise that our external photographers will be in school on **Tuesday 24th March** to take individual pupil photographs of our nursery children who have joined us during Spring term. The photographs will be taken during the morning session. You will have the option to purchase these photos, details of which will follow shortly after the photo day.



If your child attends Hordle Explorers on a Tuesday, you do not need to do anything further. For those who do not usually attend HEN on a Tuesday but wish to come in for photos, please complete **THIS** booking request form by **Wednesday 18th March**, when the bookings will close. Photos of children who do not usually attend HEN on a Tuesday will be taken between 8:45am - 9:00am. Please note, these photographs will be taken on a first come first served basis and you may be required to queue. Parents of children attending the photograph session must remain on the school site for the duration. **Unfortunately no sibling photographs will be offered on this occasion.**

PATCH Mothers Day/ Special Persons Event

For all families who have returned their completed forms and payment for the PATCH Mothers Day/Special Persons event, your children will be selecting their gifts during one of their normal HEN sessions between Monday 9th March - Friday 13th March. Gifts will then be coming home towards the end of the week.



PATCH Bag2School Collection

We are delighted to share that Team PATCH managed to raise a fantastic total of £XXXX from the recent Bag2School collection.

Thank you to all of the families who so kindly donated. We will keep you updated regarding future collection dates.

E-Safety

This online safety guide focuses on how to set up parental controls for Android apps. It contains tips on blocking app downloads, preventing auto-updates and restricting apps. Please click the guide for more information.



IMPORTANT DATES

New dates are in **BOLD**

Friday 6th March

Team Nest & Team Wild Charity Cake Sale

Monday 9th March - Friday 13th March

PATCH Mothers Day/Special Persons Event

Friday 20th March

INSET Day (School & Nursery closed)

Tuesday 24th March

HEN Portraits (Spring Starters & Mop Up Photos)

Thursday 26th March

Easter Parent/Family Event (Team Wild in School Hall and Team Nest in Nest)

Monday 30th March - Friday 10th April

Easter Holiday (School & Nursery Closed)

Monday 4th May

Bank Holiday (School & Nursery Closed)