



Session Requests Changes

After reviewing our procedures, we have decided to no longer send out session request forms two terms in advance, as per our previous policy. This is because we find that it is difficult for parents to keep track of the changes over the terms and wish to offer continuity without the additional administrative tasks.

Instead, if you wish to make any changes or add sessions for your child any time from **January 2026** until the end of the year, that have not already been requested, we would ask that you email hen@hordleprimary.co.uk to make your requests and we will deal with these on a case by case basis.

We currently have limited spaces in Wild on Mondays, Wednesdays and Thursdays
In Nest we have availability most days but only a limited number of spaces are available each day.

Notice Periods

If you wish to increase your child's hours, we will be able to apply these from the date requested
(dependent on availability)

If you wish to decrease hours, we do require a 6 week notice period

Please be reminded that all HEN Breakfast Club and After School Club at The Den for all nursery children can be pre-booked as part of your standard sessions and as such, we are able to claim funding for these
(dependent on eligibility).

Please note, any ad-hoc sessions during the term must be paid for at the invoiced hourly rate of £8 via your child's Scopay or TFC account as we are unable to claim additional funding during the term.

Invoices - Autumn Term Final Payment Reminder

A kind reminder that any remaining balances for Autumn invoices are due by Friday 31st October. Please note that a £20 surcharge will apply for any late payments, so please ensure timely payments are arranged to avoid unnecessary additional fees.

If you have made payment via TFC or if you have paid via Childcare Vouchers, please email hen@hordleprimary.co.uk to confirm.
Thank you for your cooperation.

Absence Reminder

As outlined in our Hordle Explorers Terms and Conditions, should your child be unwell and will not be attending their session at Hordle Explorers, please may we ask that you notify the nursery before 9.30am. As per updated legislation from Hampshire's Services for Young Children, this is a child protection safeguarding measure and therefore, it is compulsory that we monitor and record all absences for our nursery children. To report an absence, please can we ask that you call the nursery on 01425 611657 (there is a special answerphone function for reporting absence which is picked up by the office staff so you can call at any time) or by emailing hen@hordleprimary.co.uk.

Updated Terms and Conditions

As recently communicated, in response to recent changes to the Early Years guidance, provided by the Department for Education, the Terms and Conditions for Hordle Explorers Nursery have been updated for the academic year 2025/26 (a copy can be found attached to the Nursery Note email).

We ask that all parents read the attached document and complete **THIS FORM** to confirm receipt and that you have read and understood our updated terms and conditions.

We would be grateful for 100% return on this form by **Friday 10th October**.

Should you have any questions, please do not hesitate to get in contact and we will be more than happy to help.

Nursery Portraits - Friday 21st November

We are very pleased to advise that our external photographers will be in school on Friday 21st November to take individual pupil photographs of our nursery children.

The photographs will be taken during the morning session. You will have the option to purchase these photos, details of which will follow shortly after the photo day.

Further detail will be provided closer to the time.



PATCH CHRISTMAS RAFFLE



The much loved PATCH Christmas Raffle will be returning this year!

In preparation of this year's raffle, we are kindly asking for any donations for prizes! this could be anything from a groceries voucher to a family day out voucher, an arts and crafts bundle to a household appliance.



If you would like to donate, please email patchdonations@gmail.com.

Thank you for your support!

Save the date:
Parent Drop Ins on
Thursday 13th November

Top tip: Tax Free Childcare

To help with rising costs, we wish to remind/notify families of the Tax Free Childcare Scheme (TFC). TFC families can receive a 20% 'top up' (up to £500 every 3 months) to help with the costs of childcare through the Government run Tax Free Childcare scheme. Your eligibility depends on whether you are working, your income (and that of your partner), your child's age and circumstances. For further information on this scheme, how to check your eligibility or set up an account, please click [HERE](#).

If you are eligible, you will be provided with a unique Tax Free Childcare reference number. Please email your unique reference number to hen@hordleprimary.co.uk with the subject title "TFC reference". This must be provided to us before you make any payments to Hordle Explorers Nursery.

Please note, payments to us via the TFC scheme can take 5-10 working days to clear and to reach us so we kindly ask that payments are made in readiness for our nursery fees due dates.

Year R School Tours

For Team Wild families, please be reminded that our Hordle Primary Year R School Tours will be taking place between mid October and mid November.

Spaces are filling fast and so we recommend booking at your soonest convenience.

For more information, please click [HERE](#).

Bag2School

Help our school raise funds by donating your unwanted, quality items!

Team PATCH have organised our first Bag2School collection of the year on **Tuesday 4th November**.

Bags can be dropped off to the front school car park from the afternoon of Thursday 29th October and no later than 9am on Tuesday 4th November.

Please place the bags under the provided tarpaulin to protect all clothing from the rain. This is extremely important as wet clothes will not be collected and unfortunately, we will be forced to dispose of them

As well as clothing, Bag2School also accepts items such shoes, hats or bags. For a full list on what you are able to donate, please click [here](#).

Thank you, as always, for your ongoing support!



INSET DAYS 2025/26

We are pleased to remind you of our INSET days for the 2025/26 academic year:

- Monday 3rd November
- Friday 5th December
- Monday 5th January
- Friday 20th March

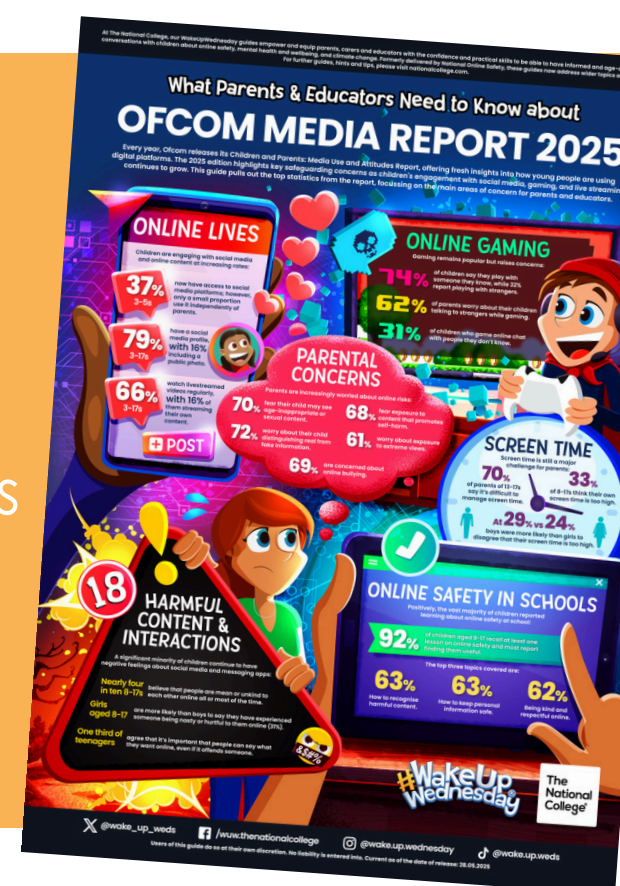
Please be advised that families are not charged for nursery sessions that would normally take place on these dates.

The nursery will be closed on Inset days.

We trust that having these dates in advance will be useful to make other childcare arrangements, where necessary.

E-Safety

As a new feature to our Nursey Notes, we wish to introduce a section on E-Safety - designed to help families begin to understand how to keep their children safe on electronic devices. This week, we are sharing Ofcom's 2025 Children and Parents: Media Use and Attitudes Report, which unpacks key findings on children's digital habits, spotlighting trends in screen use, gaming, social media, and attitudes towards online safety. Please click here to see the report



IMPORTANT DATES

New dates are in **BOLD**

Monday 27th October - Friday 31st October

Half Term

Friday 31st October

Final Autumn term payment date

Monday 3rd November

INSET Day (Nursery will be closed)

Tuesday 4th November

First Day of Autumn Term 2

Tuesday 4th November

Team PATCH Bag2School Collection

Thursday 13th November

Parent Drop Ins (Team Nest and Team Wild, 3:30pm - 4:30pm)

Friday 21st November

HEN Portrait Photos (more details to follow)

Friday 5th December

NSET Day (Nursery will be closed)