

# Governor News

Spring Term 2025

Issue 2



*Welcome from the Chair!*

Welcome to the second edition of *Governor News*. It's been another busy and productive term at Hordle, and our governors are excited to share the latest updates on our key priorities. In today's edition, you'll find insights into governor monitoring, curriculum developments, and the school's approach to improving attendance.

## *Governor Monitoring This Term*

In our strategic role as Governors, it is our overarching duty to monitor the progress of the school in ensuring all children achieve their full potential. Governors are always well-informed on pupil outcomes and the strategic work of the school in further developing practice. This year, Governors have been advised on the further work on the [Teaching and Learning Policy](#) and the new supporting documents which clarify the expectations for all of highly effective teaching and learning. The leadership team have created a best practice example which has since been shared with the local authority.

In our autumn visit, the team of Governors were monitoring the work on '**Assessment for Learning.**'

As clearly identified in the implementation guidance, effective teachers use assessment throughout all phases of learning and use this to inform the feedback loop. Governors are aware from research shared at Governing Body meetings that high quality feedback is known to have one of the greatest impacts on pupil progress.

## Research says:

Barak Rosenshine emphasized the importance of **high-quality feedback** in his Principles of Instruction. He highlighted that effective feedback helps students correct errors, deepen understanding, and reinforce learning. One key principle states:

*“Successful teachers spend more time guiding students' practice by providing explanations, checking for understanding, and giving feedback that is clear, specific, and corrective”*

The Governors are aware that the teaching team pride themselves on high levels of assessment and this was evident in all the classes visited by governors. Teaching assistants were actively engaged with their small groups and clearly well-informed on the learning journey and the intended learning outcomes. Throughout their sessions, teaching assistants gave positive, verbal feedback, scaffolding children's response to aid with up-levelling and guiding and supporting pupils to achieve their best. It was also evident that pupils with additional needs were receiving feedback linked to their own personal targets.

Teachers talked openly about the various strategies used in school for assessment and feedback which includes a balance of verbal feedback, written feedback and more formal assessment periods at points in the term, all of which are carefully used to inform the teaching and learning journey. Governors felt there was a really positive atmosphere in all classes visited where the dialogue between all adults and children was relentlessly focussed on learning with invaluable feedback and guidance towards next steps.

On speaking to groups of children, it was very clear that they all understood how they receive feedback and knew that when they saw yellow highlighter in their books, this was an indication that they had met their target and when they received green highlighter, this meant 'green to grow' - something to reflect upon. The children, in all year groups across the school, had a clear understanding of how feedback works and spoke enthusiastically about many aspects of their learning and the support they receive from the adults around them.

As always, the governors were highly impressed with the behaviour of children across the whole school. They were engaged in their learning, enthusiastic to share their work and to talk confidently to the governors about Hordle CE Primary School.

It was great to see so many learning superheroes in action! Captain Aspiration would be proud.

# Curriculum Development

Governors have been interested to learn about the further developments to the curriculum and the work of the English Team on developing standards in writing.

The staff team have worked with Leah Crawford, a member of the Opening Doors team, to learn about approaches to teaching English which ensure an ambitious curriculum for all!

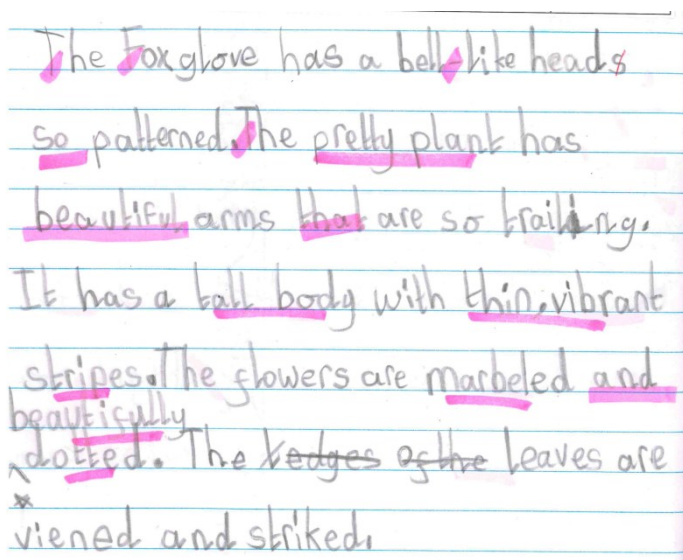
## What is Opening Doors?

This is a set of guiding principles and ideas to help all ability pupils access stimulating and engaging fiction, poetry and non-fiction. These texts include some whole novels as well as chapters and small extracts. Team Hordle have had a high quality English curriculum for many, many years but this approach has allowed the team to take units and make them even better.

As a result of the team's success with this approach and the impact of the work on children, the school has been recognised and is now working as an Opening Doors HUB school, supporting other schools across Hampshire and the Isle of Wight in sharing excellent practice.

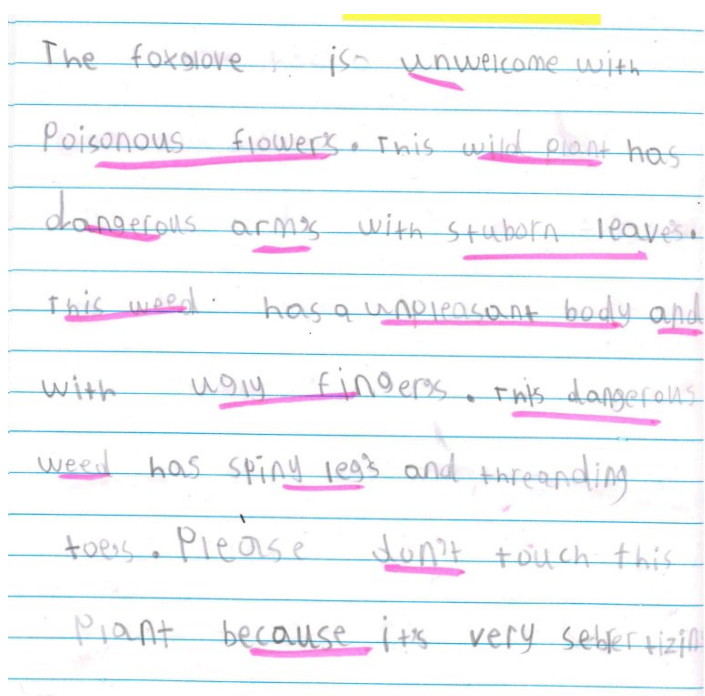
## What has been the impact?

Children are highly engaged in English lessons and make excellent progress in their writing. The outcomes of pupils are of an exceptional quality. When Governors monitor learning, children are always fully engaged in the writing process and talk proudly about their English books and their accomplishments.



The Foxglove has a bell-like heads  
so patterned. The pretty plant has  
beautiful arms that are so trailing.  
It has a ball body with thin, vibrant  
stripes. The flowers are marbled and  
beautifully dotted. The edges of the leaves are  
vined and striked.

Examples of Year 2 Non-Fiction and Weeds



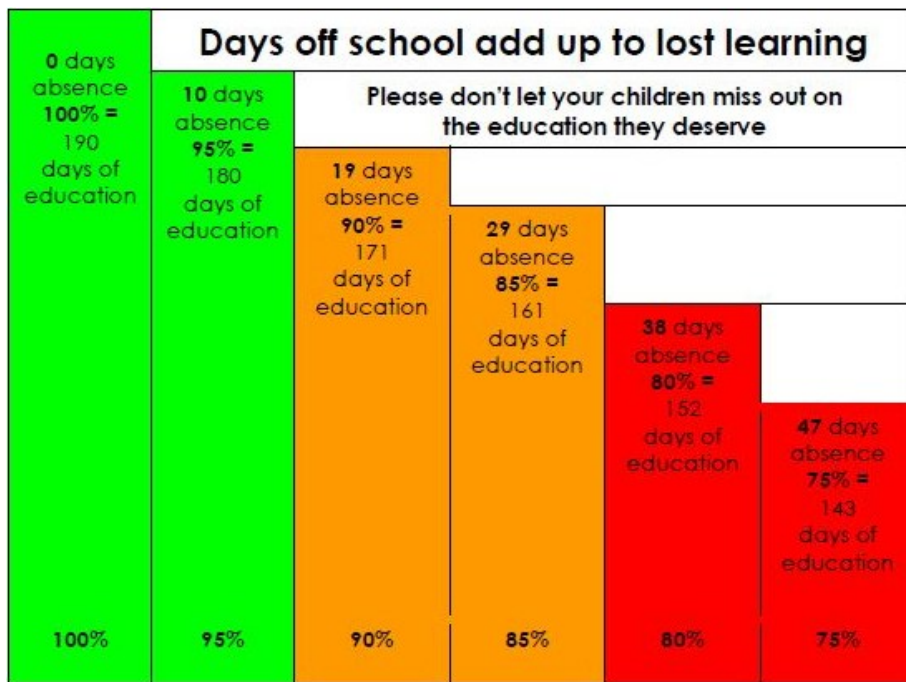
The foxglove is unwelcome with  
poisonous flowers. This wild plant has  
dangerous arms with stubborn leaves.  
This weed has a unpleasant body and  
with ugly fingers. This dangerous  
weed has spiny legs and threatening  
toes. Please don't touch this  
plant because it's very self-serving.





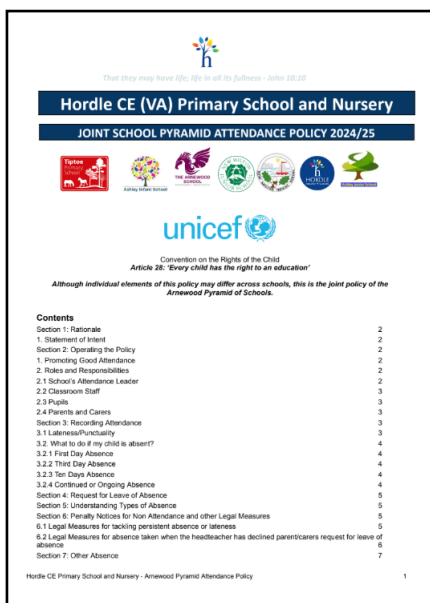
# Attendance

The Governing Body are committed to ensuring the best possible educational experience for all our pupils here at Hordle CE Primary School and Nursery. One of our key, ongoing areas of focus is monitoring school attendance because regular attendance is fundamental to both well-being and living life in all its fullness.

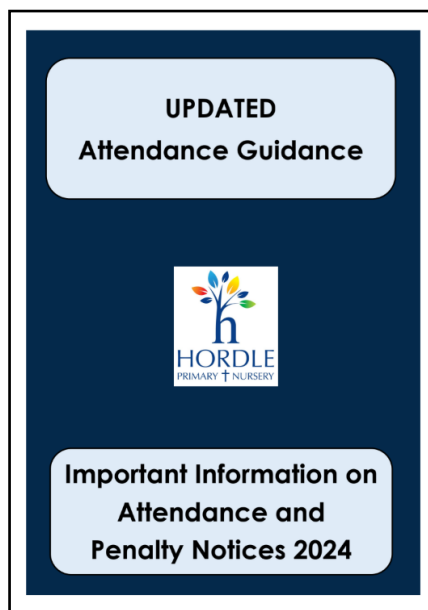


## The Attendance Pathway

To provide a structured and consistent approach to attendance, Hordle have their very own Attendance Team who follow the Attendance Pathway which was devised with support from the Local Authority. This clearly outlines steps to follow in order to support families in helping to identify and address barriers to attendance.



Joint School Pyramid Attendance Policy 2024/25



Updated Attendance and Penalty Notice Guidance 2024/25

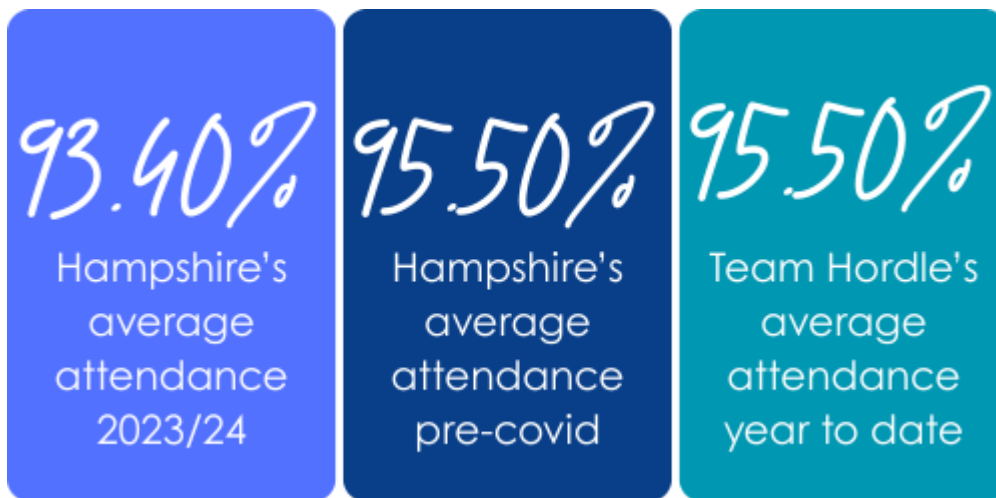


## School Compliance

Governors are reassured to see the school continuing to follow the Department for Education (DFE) guidance on attendance and take all measures necessary, which can include fining, to minimise absence. The school's commitment to national best practice ensures that pupils here at Hordle receive the best chances of a high quality education.

## Areas to Develop

Despite the school's continued efforts, we are still seeing high levels of absence. This remains a priority for children in all year groups, as consistent school attendance directly impacts on a child's sense of belonging, educational achievement and wellbeing. It is well known that children who miss out on learning feel anxious on their return to school.



## How Can You Help?

Governors recognise that there are times in the year when attendance is more of a challenge. This includes the weeks before and after school holiday periods. We understand that children can feel lethargic towards the end of term and this is perfectly natural yet we urge all families to be mindful to minimise absence wherever possible.

We continue to support the Attendance Team in their relentless efforts to raise attendance and support families.

# Happy Easter!

On behalf of all the Governing Body, we would like to thank Lou and her team for their extraordinary dedication and hard work in helping all children at Hordle CE Primary School continue to achieve their best.

We wish you a very Happy Easter.