A stylized white tree branch with several leaves in various colors: red, blue, yellow, green, and white. The background is a solid dark blue.

Hordle Primary School Through the Ages

Hordle School Through the Ages



The History of Hordle Village



Hordle Church





History

School
Layout

Hordle Primary School Through the Ages



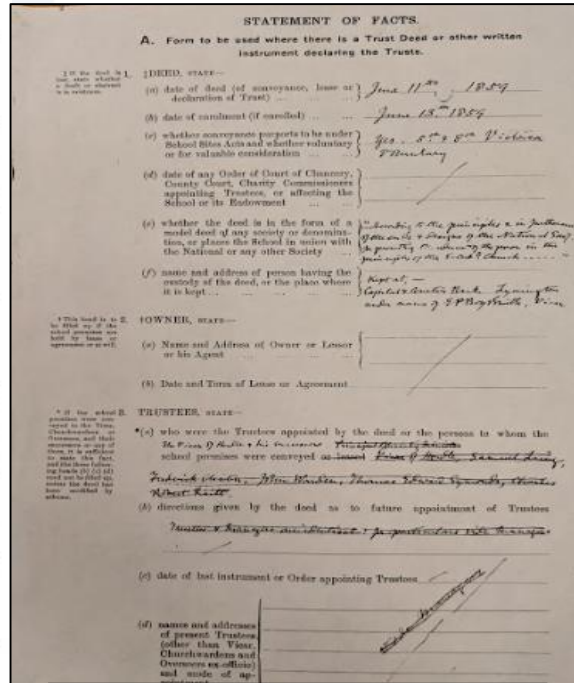


History of Hordle School



By The Key Stage One Team

Hordle Primary school first opened on 13th June 1859 and had just two classrooms (Wilverley and Deerleap). Not much is known about the school then but in the 1920's Mr Price was the Headteacher. He lived in the cottage which is now Mrs Payne's office. The Beehive and the PPA room.



Above: Original paperwork for opening of school.

Hordle Primary School first opened on 13th June 1859 and had just two classrooms (Wilverley and Deerleap). Not much is known about the school then but in the 1920s Mr Price was the Headteacher. He lived in the cottage which is now Mrs Payne's office, The Beehive and the PPA room.



Many children walked a long way to school so their clothes often got wet. So they hung coats by the fire. The 111 pupils at this time did not wear a uniform.



Many children walked a long way to school so their clothes often got wet so they hung coats by the fire. The 111 pupils at this time did not wear a uniform.

The children did not have toilets like we do today but instead had a bucket for the boys and a bucket for the girls. How disgusting! Did you know if they were naughty children would get the cane or have to stand on an iron plate?



The children did not have toilets like we do today but instead had a bucket for the boys and a bucket for the girls. How disgusting! Did you know if they were naughty children would get the cane or have to stand on an iron plate?



Mr Price was the Headteacher for over 30 years and was known for his love of caning children. In the 1940s and 1950s, the children still didn't wear uniform but they did spend a lot of time learning how to form letters and doing their sums.

Mr Price was the Headteacher for over 30 years and was known for his love of caning children. In the 1940s the children still didn't wear uniform but they did spend a lot of time learning how to form letters and doing their sums.

Milk was delivered for the 100 pupils
but this was frozen so had to
be defrosted by the fire and was
often warm.



Milk was delivered for the 100 pupils but this was frozen so had to be defrosted by the fire and was often warm.

There were still only two classrooms in the school and Deerleap had a stage where the mayor stood when he came to visit. It was during this time when children were allowed to start eating at school and they could get their food from a small canteen building outside the church.



There were still only two classrooms in the school and Deerleap had a stage where the mayor stood when he came to visit. It was during this time when children were allowed to start eating at school and they could get their food from a small canteen building outside the church.



History of Hordle School

Next 

By The Key Stage One Team

During the 1960s there were three different headteachers (Miss Rich, Mr Sears and Mr Lailey.) Mr Lailey was headteacher of Hordle Primary School for almost 20 years and was well respected and known for being firm but fair. Pupils fondly remember him bringing his guitar out onto the playground and pupils would gather around and sing 'Puff the magic Dragon'.

During the 1960s there were three different headteachers (Miss Rich, Mr Sears and Mr Lailey). Mr Lailey was headteacher of Hordle Primary School for almost 20 years and was well-respected and known for being firm but fair. Pupils fondly remember him bringing his guitar out onto the playground and pupils would gather around and sing 'Puff the Magic Dragon'.

It was Mr Lailey was headteacher
that blue uniforms were introduced
and the house system was created
with Blue, Red, Green and yellow house.
In the 1960s there was a hall on the
playground but this was rebuilt
in the late 70s with the hall and
staffroom we have today.

Mr Lailey



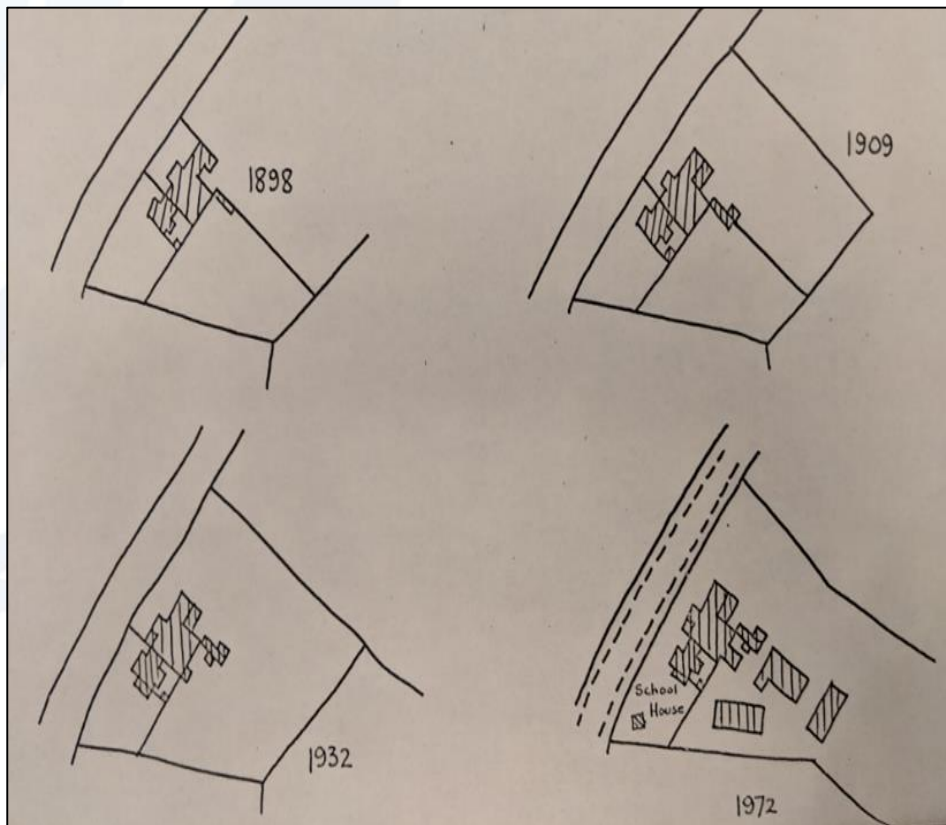
It was while Mr Lailey was Headteacher that blue uniforms were introduced and the house system was created with Blue, Red, Green and Yellow house. In the 1960s there was a hall on the playground but this was rebuilt in the late 70s with the hall and staffroom we have today.



Did you know that in
1972 a group of dads
dug out and built a
swimming pool where
the ball court is
today?

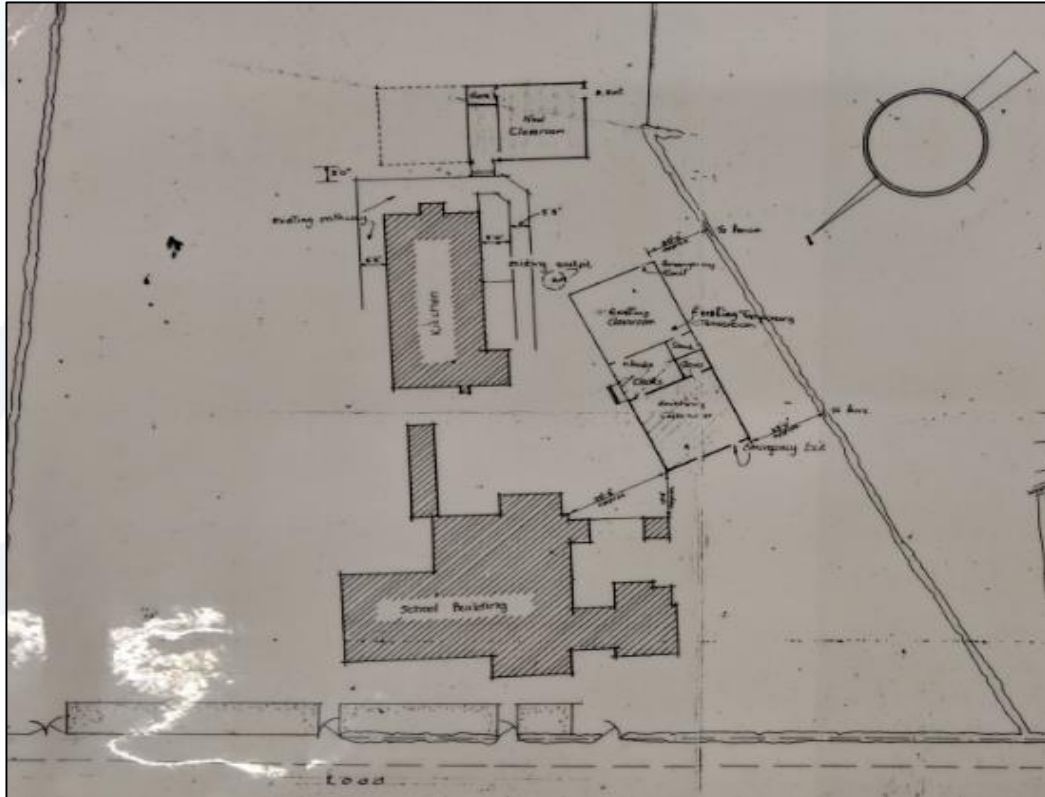


Did you know that in 1972, a group of
dads dug out and built a swimming pool
where the ball court is today?



Map of Hordle School in 1963

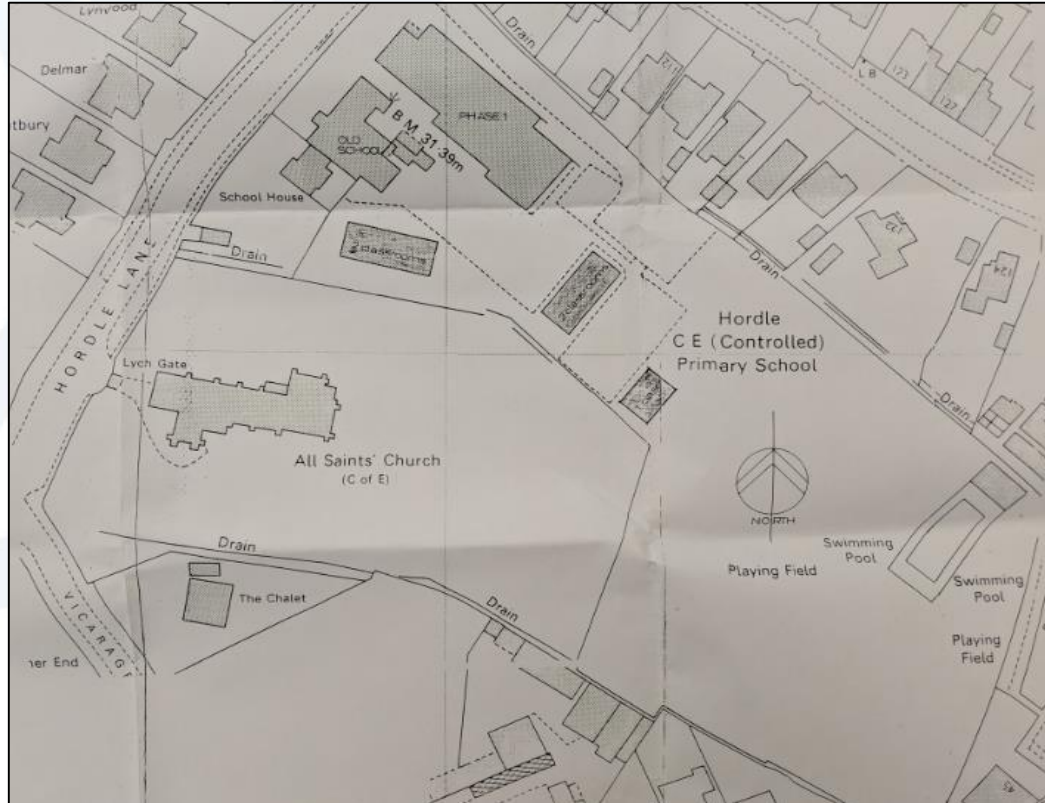
Next 





Map of Hordle School in 1993

Next



Map of Hordle School in 1997

Next 





The entrance to the school hasn't changed drastically over the years as Deerleap classroom which can be seen in both images was one of the original classrooms. In the picture on the right, you can see a building to the left. In the late 70s, the current hall, staffroom and office buildings were built however the layout was quite different. The headteacher's office was also over this side rather than next to the library where it is now..



When Foundation Stage was originally built, it did not have an outside area and there was also a divide between the classroom inside.



Before the Westlake Building was built, even as far back as 1970s and 80s, additional classrooms were needed due to Hordle's population growth. Portacabins provided this additional space. There were two portacabins (one by the Church fence and one on the current playground) and these both contained two classrooms.



Here you can see the portacabin which was located by the church fence; this portacabin contained two classrooms. You can also see the adventure trail which hasn't changed very much since the 1990s.



Here you can see the portacabin which was located on the playground. This building also contained two classrooms. In this location, we now have Badger Class which was built in 2010 and the Acorn Room which was built in 2014.



Originally, the school consisted of just two classrooms: Wilverley and Deerleap. In 1995, the Westlake Building was built which completely transformed the school and gave us Squirrel, Hedgehog, Ash, Hazel and Oak classrooms together with the library and the Burrow. Team Hawkhill was added on a few years later.



The 'ball court', as we know it today, was built on top of an original pond and the outdoor swimming pool which had been dug out by a group of dads in 1972.



Housing

Amenities

Facilities

The History of Hordle Village





Housing

Over the last 160 years the housing in Hordle has changed significantly so now there are well over 1660 houses. There are many historical houses to be found and a huge amount of them are located along Everton Road.

Over the last 160 years, the housing in Hordle has changed significantly so now there are well over 1660 houses. There are many historical houses to be found and a huge amount of them are located along Everton Road.

Some of the oldest buildings which are in Hordle are called cob cottages such as Swan Cottage. Other dwellings located in Hordle are: New Forest cottages, Victorian houses and modern buildings.



Some of the oldest buildings which are in Hordle are called 'cob cottages' such as Swan Cottage. Other dwellings located in Hordle are: New Forest cottages, Victorian houses and modern buildings.



By The Lower Junior Team

In the 1960s many houses were developed on Woodcock Lane but most recent developments were built on Nursery Close opposite All Saints Church.



In the 1960s, many houses were developed on Woodcock Lane but most recent developments were built on Nursery Close (opposite All Saints Church).



Many changes have been made to Hordle enterprises over the last 100 years. In the past, lots of commercial enterprises have been changed into something different of use. In 2018, Hordle Nurseries was transformed into a close of houses called 'Nursery Close'. One of the most visited places out of Hordle's enterprises is the Stopples Lane shopping parade. With its range of a pet store, Chinese takeaway, Co-op and sewing store. Along time ago, during the 1970s, The Three Bells Pub was moved to Silver Street and is still in the same place now.

Many changes have been made to Hordle enterprises over the last 100 years. In the past, lots of commercial enterprises have been changed into something different of use. In 2018, Hordle Nurseries was transformed into a close of houses called 'Nursery Close'. One of the most visited places out of Hordle's enterprises is the Stopples Lane Shopping Parade with its range of a pet store, Chinese takeaway, Co-op and sewing store. Along time ago, during the 1970s, the Three Bells Pub was moved to Silver Street and is still in the same place now.



Amenities

By The Lower Junior Team

Next 



A close neighbour of The Three Bells is the well visited petrol station (which also does other things such as food) with its large range of customers. It is located on the corner of Everton Road and Silver Street. Apple Court Gardens on Hordle Lane provides a pleasing variety of themed feature gardens and walks. In the 1960s there was once a very small supermarket which served the Hordle community well but is now the Hordle Pharmacy and is very glad to be so.

A close neighbour of the Three Bells is the well visited Petrol Station (which also does other things such as food) with its large range of customers. It is located on the corner of Everton Road and Silver Street. Apple Court Gardens on Hordle Lane provides a pleasing variety of themed feature gardens and walks. In the 1960s there was once a very small Supermarket which served the Hordle Community well but is now the Hordle Pharmacy and is very glad to be so.

The Post Office sadly closed down in 2018 because the people decided to retire and live there. There used to be a Nursery opposite the school which turned into houses. There is a new road called Nursery Close built in 2017-18. Before there was a bakery on Everton Road which got turned into an estate agents in the turn of the century but now a house.



The Post Office sadly closed down in 2018 because the people decided to retire and leave there. There used to be a Nursery opposite the school which turned into houses. There is a new road called 'Nursery Close' built in 2017-18. Before, there was a bakery on Everton Road which got turned into an estate agents at the turn of the century but is now a house.

Amenities

By The Lower Junior Team



There used to be a bakery on Everton Road but in around 2000 got changed into an Estate Agency. Now it is a nice house that somebody lives in. In summary, there has been alot of changes to Hordle and the history is fascinating! We're sure there will be many more changes to come so why not come and visit!

There used to be a bakery on Everton Road but in around 2000 it got changed into an Estate Agency. Now it is a nice house that somebody lives in. In summary, there has been alot of changes to Hordle and the history is fascinating! We're sure there will be many more changes to come so why not come and visit!





Located in the northern corner of the village, at the western side of Vaggs Lane, is the Rec. The Rec was an empty space until 1998. This facility includes a lovely big area for Hordle cricket club, football, bowles and an outside gym to get your heart racing. The gym was installed in 2012. Just around the corner, is a small park and is about suitable for 14 year olds. It was refurbished in the year 2000.

Located in the northern corner of the village at the western side of Vaggs Lane is the Rec. The Rec was an empty space until 1998. This facility includes a lovely big area for Hordle cricket club, football, bowles and an outside gym to get your heart racing. The gym was installed in 2012. Just around the corner is a small park and is about suitable for 14 y.o. It was refurbished in the year 2000.

Before Hordle Recreation Centre was developed, it was just an empty field! However, this was later developed into a multi-purpose games area in 1948 and can be found on Ashley Lane. The multi-purpose games area is home to the Hordle Village cricket side, football, bowls and many more!



Before Hordle Recreation Centre was developed, it was just an empty field! However, this was later developed into a multi-purpose games area in 1948 and can be found on Ashley Lane. The multi-purpose games area is home to the Hordle Village cricket side, football, bowls and many more.



Presently, the pump track is available at the end of Dudley Avenue in Hordle and is an open space with a lot of space. The pump track is a bumpy dirt road with about 5 turns. At the pump track, there is a small passage through a hedge and you pass a little bridge then you can walk a little further and get to Hordle Cliffs.

Presently, the pump track is available at the end of Dudley Avenue in Hordle and is an open space with a lot of space. The pump track is a bumpy dirt road with about 5 turns. At the pump track there is a small passage through a hedge and you pass a little bridge then you can walk a little further and you get to Hordle Cliffs.



Facilities

By The Lower Junior Team



In 2016, the Hordle Pump track was introduced. Before this, the area was a quarry and then became a landfill site until it opened to the public in 2016. The pump track can be found at the end of Dudley Avenue where you can run, ride your bike or scooter and have fun with your family.

On the South side of Ashley Lane at Golden Hill, a wooded area and a pond has been made into a nature area. On the opposite side of this is Hordle fishing lakes which is a place where everyone enjoys fishing.

In 2016 the Hordle pump track was introduced. Before this, the area was a quarry and then became a landfill site until it opened to the public in 2016. The pump track can be found at the Dudley Avenue where you can run, ride your bike or scooter and have fun with your family. On the South side of Ashley Lane at Golden Hill, a wooded area and a pond has been made into a nature area. On the opposite side of this is Hordle fishing lakes which is a place where everyone enjoys fishing at.



Poetry

Historical
Facts



Hordle Church



Church seven

I must down to the church again,
to the holy song and pens,
to pray and pray again hoping god will
hear my news,
the old country folks sat so quaint
and still,
a beautiful view awaking the hill.

I must go down to church again,
to the lonely organ and song,
the history so long,
one destroyed at milford on sea,
the other just deserting me.

I must leave the church now, ^{with} god
waving goodbye,
god will be here for me,
up until I die.



Church Poetry

Next

By The Upper Junior Team



Next



God's Dwelling

Tapestry of our saviour,
For everyone to share;
I pray for the gallen and for the weak,
Together as one we will care.

The creator of the universe,
He made our every limb;
We follow in his footsteps forever,
We live to serve him.

You blessed us with the church,
A place where we can pray;
A place to feel close to you,
Nothing we can't say.



Church Poetry

Next

By The Upper Junior Team



Next



Hordle Church

As I walk through this place of worship, my
mind is put at rest.

As I think about my ancestry and all the
ways I'm blessed.

The arched windows are standing proud, projecting
out the light.

As you take a seat in a pew and reflect on
your wrongs and rights

Facing the front, I sit up tall and proud
listening to the calming words of prayer.

And indulge in the wonderful smell of the
sweet holy air.

Hymns echo high to the rooftops as we all
join in and praise;

To the one who's always in our church, a
place to spend our days.



Church Poetry

Next 

By The Upper Junior Team



Next 





Church Poetry

Next

By The Upper Junior Team

A place of remembrance

The long lost echoes guide me to,

The memorable place where we can speak to you,

As we let our lives sail by,

We remember those who are now in the sky.

The adorned patterns make me feel free,

This is a place where we all can be,

Relaxing, calming and peaceful too,

Come on over why don't you.



Next





Church Poetry

Next

By The Upper Junior Team

As I took my first step into the breath-taking heaven,
Charming wonders danced through my mind,
You sit with your head resting, feeling the shine
within your heart,
This peaceful creation is one of a kind.

As you sit upon the floating pews,
You hear dreaming words fly around you,
The golden eagle stands proud,
Spreading its wings to the crowd.

As the bible shines out its holy light,
The joyful choir sings praises around,
With the shouting echos,
we ponder our way out of sight.



Our Hordle Church

The church is where we pray,
Pray about love, friendship,
and praying for the lord,
Who was born in the hay.

The Church is not just ours,
But for everyone,
Parents, children, friends,
For everyone to lay down flowers.

The church is full of mysteries,
With the bible,
The candles,
and stained glass windows for all to see.

The church is where we feel free,
For the power and
The holy lord, Cause next time you go,
I promise, that's where I'll be.



Church Poetry

By The Upper Junior Team



History of All Saints Church

By The Upper Junior Team

"What do u already know about hordle church?"
Im here to tell you just that - Did you know this is the third church that this is the third church that has stood in Hordle? The church was build in 1873 in memory of John peirse kenward and is still standing right now.



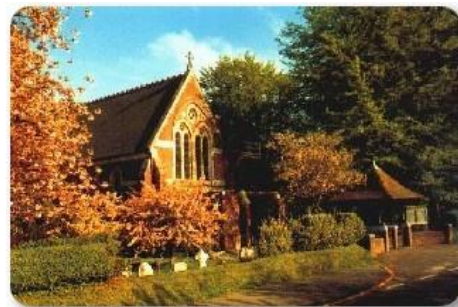
"Did you know that the first church build in hordle parish?"
It was created in 1080 AD and the second church was build in 1890. If you didnt know that youk do know. Sadly they both had to be demolished and knocked down for diggerent reasons, the thurst church was knacked down because it became extremely flimsy. The second church was knocked down due to the extremely poor quality of the building. If you go to church you will see many people paying there respect to god.

History of All Saints Church

Next 

By The Upper Junior Team

Today are incredible church is Stoked with magical people and puzzing with love. Now my time is over; thankyou for reading and I hope you you have learnt a fact or two but these are all my facts bringing talks time to an end!



The church you know in Hordle was built in 1872 at the same time the organ was built by Thomas C Lewis.

The great staining glass windows stand tall with Jesus when the suns rays shine bringing life to the church. The great golden eagle (the altar) stands out in the golden light; the altar holds the large bible. The electric organ stands tall in the corner.



History of All Saints Church

Next 

By The Upper Junior Team

The gravestones cover the ground for the many amazing people. I was baptized by Rev Paul in Hordle, memories float around inside my head. Happiness fills the church when peace gets active.



The tall, towering Hordle church is right next to the fantastic Hordle School. Hordle church is the best. I don't know how life would be without Hordle church.

Rows and rows of pews have handmade pillows to be sat on. The pews which are light brown, have been sat on. The many people across the village come and worship at Hordle church.

The current Church was built in 1872 in memory of John Peirse Kennard.



Above: Names of previous Vicars of Hordle.



This is the 3rd Church that has stood in Hordle Parish. The first, was built near the cliff top in 1080AD. The decision was made to move the Church to a more central village location, nearer to the people. The 2nd Church was built in 1830.

This is the original Baptismal Font. Fonts were traditionally built at the back of the Church. This was so that those who were newly Baptised could go out into the World to spread the word of God.



Rev Paul usually uses this smaller Font in Baptism services nowadays. This Font is dedicated to the Rev Archie Muir, a Vicar at the Church between 1965 -1973.

History of All Saints Church

Next 

By The Church School Vision Team



The organ was built in 1873 by Thomas C. Lewis. The wooden casework around the organ was completed by John F. Bentley who also designed Westminster Cathedral. Nowadays an electric fan blows air through the pipes but before electricity was installed someone had to pump air around the organ by hand.



There are two keyboards as well as a pedal board that you play with your feet. You have to be able to multitask!



These 'stops' change the flow of air through the pipes to alter the sound the organ makes.

The pipes you can see on the outside are 'dummy pipes' – they don't make a noise. Inside are the real pipes – 702 of them altogether! The smallest is about 15cm in length and the longest pipe is 8ft long.

